

**Reliable, Trustable,  
Responsible.**



**Reliable**

Reliable quality products

**Trustable**

We put our reputation in first position

**Responsible**

What we promise what we do.

***We believe, we can, we just do it.***



**Suzhou Gudwill Grinding Technology Co., Ltd.**

**Add:** RM 1129,NO.18, LONGSHAN SOUTH RD, GUANGFU, WUZHONG, SUZHOU, CHINA

**Mobile/WhatsApp:** +86-188 9696 7812,+86-173 7273 9851

**Tel:** +86-0512-65580060

**Email:** sales@gudwill.cn

**Web:** www.gudwill.cn



Gudwill focus on grinding technology,  
One-stop solution for  
your grinding requirement.

**DOUBLE SURFACE GRINDING MACHINES**

# COMPANY PROFILE

Goodwill is one machine tool service company who focus on grinding solution. If you or your friends need solutions for grinding machining technology, we believe we can be one of choice for you reference.

Goodwill based on our team reputation and ability, have built partner relationship with more than 50 factories related to grinding industry, and most of them are listed companies, leading enterprise and even international type groups.

Goodwill products range have more than 1000 models grinding machines and service range have cover automobile, hydraulic parts, motors, mould, tools, spindles, gears, aerospace, medical, 3C, green energy, machine tools and so on industries.

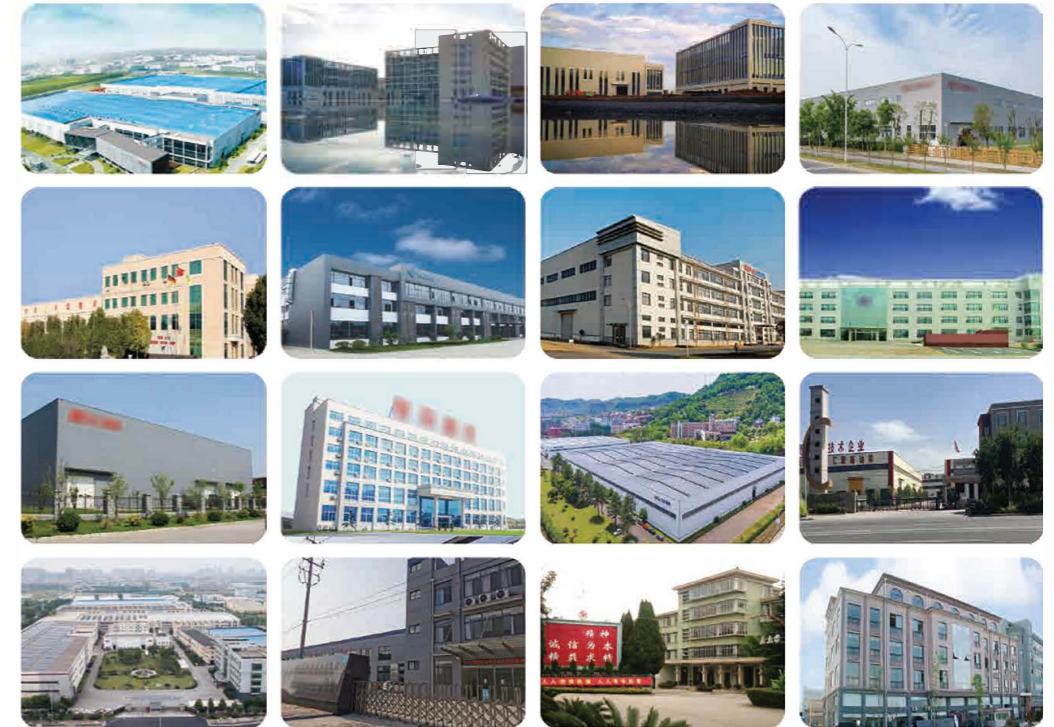
Goodwill what we can offer to the customers, reliable products, trustable service and responsible attitude, our sales team, service team, technical support training center, showing and inspection room all are ready to meet any requirements from worldwide friends.



# COOPERATIVE PARTNERS

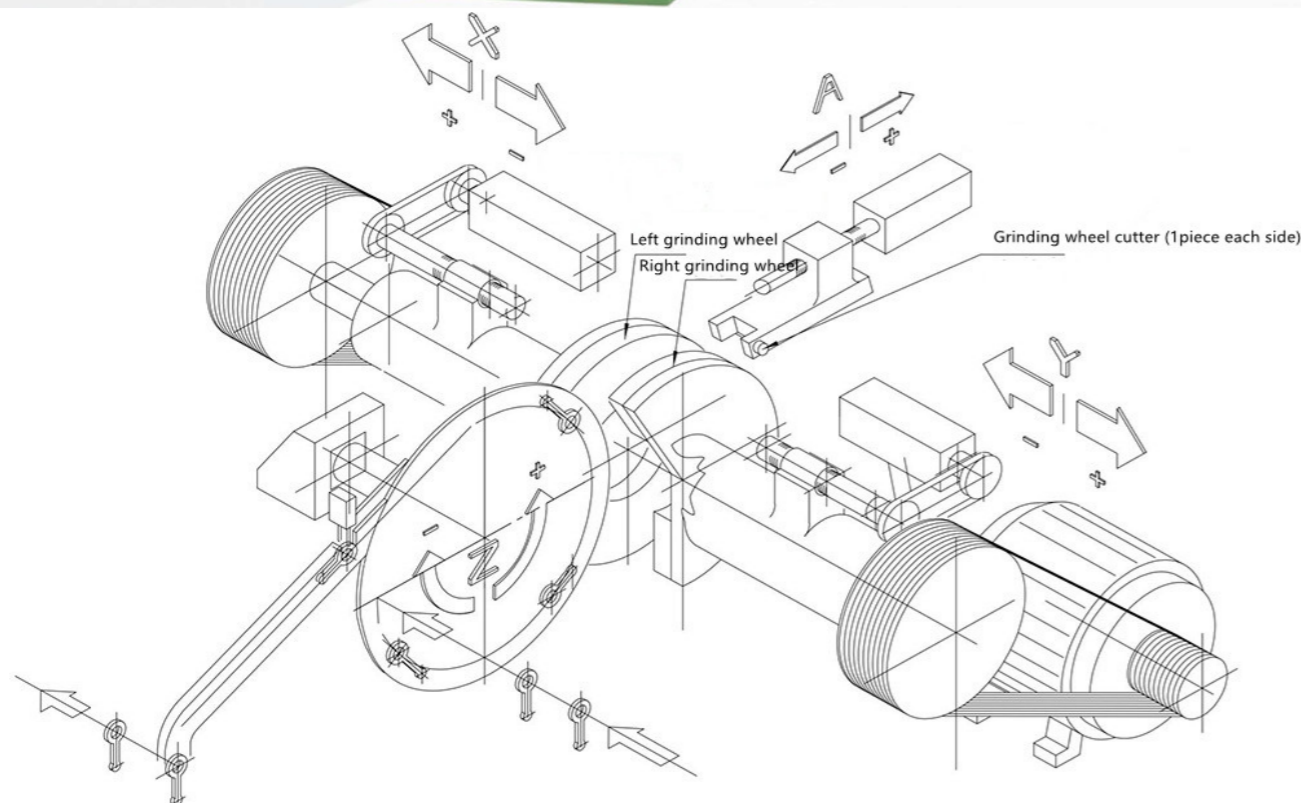
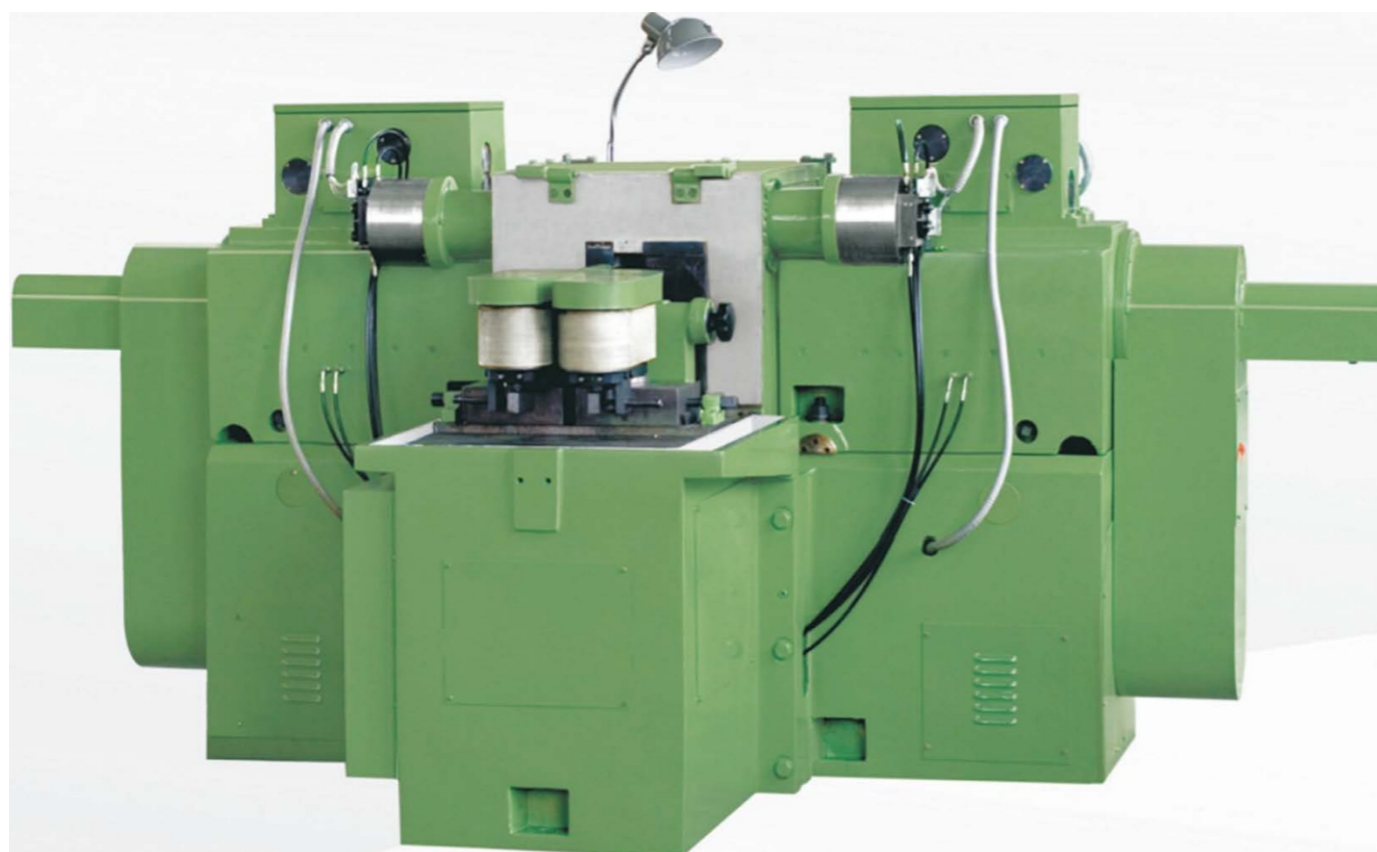
Goodwill based on their team reputation and ability, have built partner relationship with more than 50 factories related grinding industry, and most of them are listed companies, leading enterprise, and even international type groups. Below the real photos from our partners for their buildings and workshops inside view. All of them pass ISO9001 QC system and have CE standard ability for international market. The more important advantage point is that most of our partners are around us in 300KM distance, very easy and convenient for us to communicate and control whole process.

1. Valve ball grinder
2. surface grinding
3. Double column grinder
4. Centerless grinder
5. Cylinder grinder
6. internal grinder
7. Bearing grinder
8. Bearing ball grinding, polishing and lapping
9. Camshaft and crankshaft grinder
10. Double surface grinder and lapping machine
11. Vertical complex grinder
12. Rotary table grinder
13. Roll grinder
14. Tools grinder
15. Screw grinder
16. Honing machine



## 卧轴双端面磨床

### HORIZONTAL DOUBLE END FACE GRINDING MACHINE



## M7650A、B / M7660A、B 卧轴双端面磨床

- 本机床主要用于中小型号轴承内、外套圈的两端面磨削，也可用于活塞环、气门座、阀板及其它圆形工件端面的磨削加工。
- B型机床的副磨头电机加变频器，可以无级调速，适用于轴承套圈两端面不等面积的等量磨削。
- 机床采用贯穿式、皮带辊轮摩擦送料方式，实行连续磨削的工艺方法，并可配用自动上料提升装置。
- 机床导轨采用高精度交叉滚子直线导轨，刚性好，重复定位精度高，使用寿命长。磨头进退、进给，砂轮自动修整均由电气和液压控制。

- This machine tool is mainly used for the grinding of the two end faces of medium-sized bearing's cone and cup. It can also be used for the grinding of end faces of piston ring, air valve seat, valve and other round work.
- The auxiliary grinding head of B type machine tool with frequency transformer is able to have stepless speed change. It is suitable for the equal quantity grinding on the different area of the two end faces of bearing cup.
- The machine tool adopts the feeding way of through feed with the belt roller to feed. The working process is continuous grinding and an automatic work lifting device can be used.
- The guides of the machine tool adopts the high precision cross roller straight guide, so it has good rigidity, high precision on repeating to position and a long service life. The grinding head's moving forward and backward, the automatic adjustment of the grinding wheel can all be controlled by electric and hydraulic system.

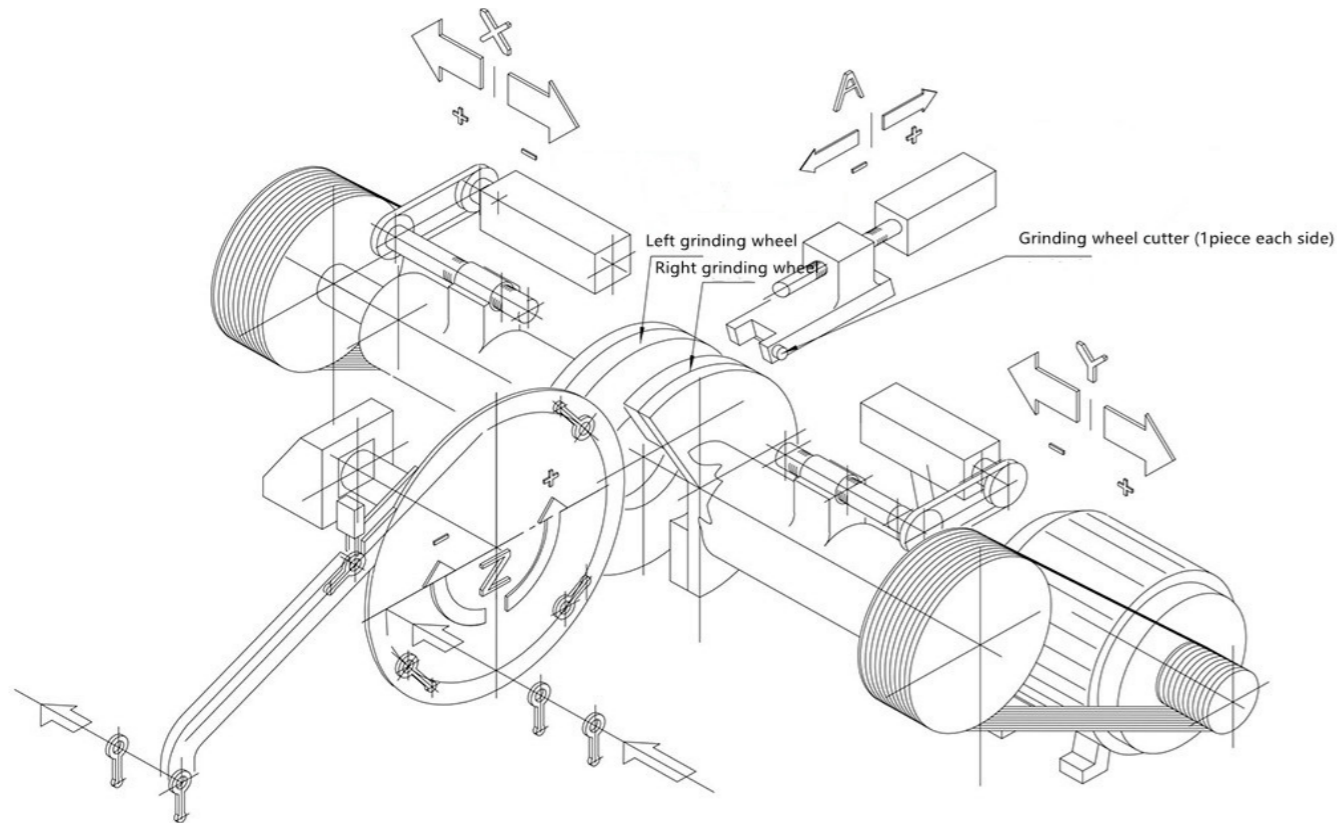
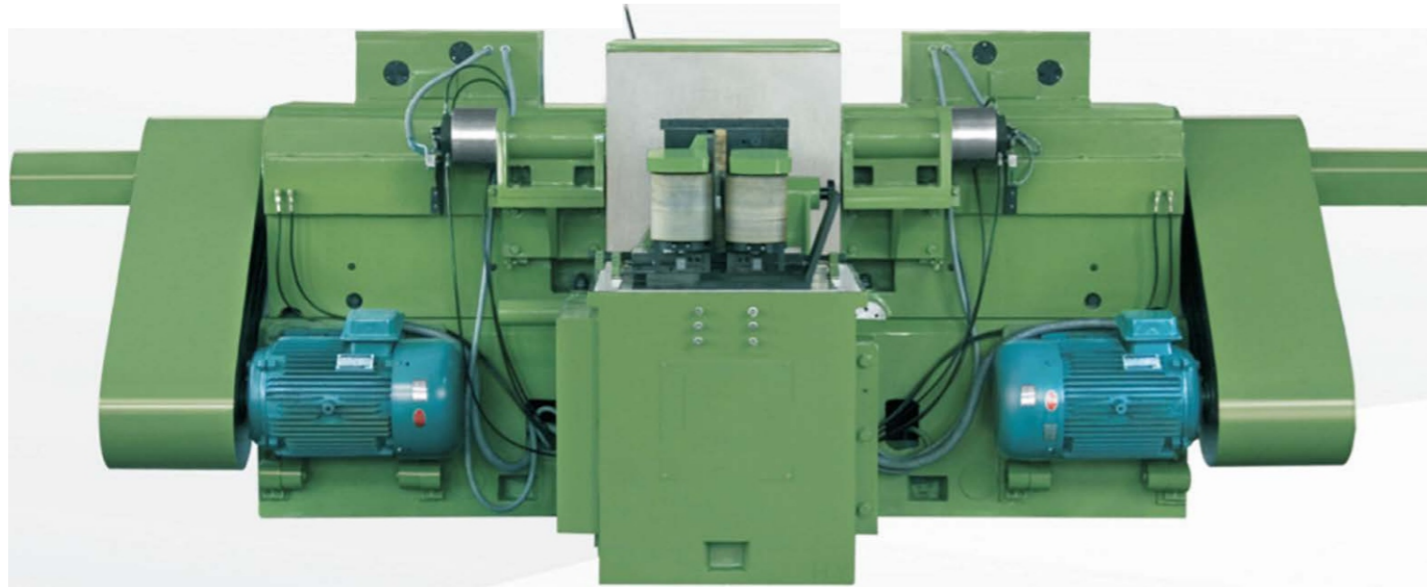
### 机床工作精度 (The working precision of the machine tool) :

工件直径 (mm) Diameter of work	平行差 (mm) Parallel difference	平面度 (mm) Flatness	厚度差 (mm) Thickness difference	表面粗糙度Ra (μm) Surface roughness Ra
25-50	0.002	0.002	0.01	0.32
50-90	0.004	0.004	0.02	0.32
90-140	0.005	0.005	0.02	0.32
140-180	0.006	0.006	0.02	0.32

### 主要技术参数 (The main technical parameter)

项目 Item	单位 Unit	参数 Parameter	
		M7650A、B	M7660A、B
工件直径 Diameter of work	mm	φ 20—φ 110	φ 25—φ 180
工件厚度 Thickness of work	mm	2—40	2—60
砂轮尺寸 (外径×内径×厚度) Size of the grinding wheel (outside diameter×inside diameter× thickness)	mm	500×20×63	600×25×63
磨头主轴转速 Rotation speed of principal axis of the grinding head	r/min	1025	890
送料盘直径 Diameter of the feeding disk	mm	125	160
送料盘转速 Rotating speed of the feeding disk	r/min	5 - 10.8	2 - 11
主电机功率 Power of the main motor	Kw	32	40
机床外形尺寸 (长×宽×高) Outside dimension of the machine tool (length×width×height)	mm	3075×2495×1600	3350×2600×1650
机床重量 Weight of machine tool	Kg	5000	8000

## 卧轴双端面磨床 HORIZONTAL DOUBLE END FACE GRINDING MACHINE



- 本机床主要用于中小型号轴承内、外套圈的两端面磨削，也可用于活塞环、气门座、阀板及其它圆形工件端面的磨削加工。
  - B型机床的副磨头电机加变频器，可以无级调速，适用于轴承套圈两端面不等面积的等量磨削。
  - 机床采用贯穿式、皮带辊轮摩擦送料方式，实行连续磨削的工艺方法，并可配用自动上料提升装置。
  - 机床导轨采用高精度交叉滚子直线导轨，刚性好，重复定位精度高，使用寿命长。磨头进退、进给，砂轮自动修整均由电气和液压控制。
- This machine tool is mainly used for the grinding of the two end faces of medium-sized bearing's cone and cup. It can also be used for the grinding of end faces of piston ring, air valve seat, valve and other round work.
  - The auxiliary grinding head of B type machine tool with frequency transformer is able to have stepless speed change. It is suitable for the equal quantity grinding on the different area of the two end faces of bearing cup.
  - The machine tool adopts the feeding way of through feed with the belt roller to feed. The working process is continuous grinding and an automatic work lifting device can be used.
  - The guides of the machine tool adopts the high precision cross roller straight guide, so it has good rigidity, high precision on repeating to position and a long service life. The grinding head's moving forward and backward, the automatic adjustment of the grinding wheel can all be controlled by electric and hydraulic system.

### 机床工作精度 (The working precision of the machine tool) :

工件直径 (mm) Diameter of work	平行差 (mm) Parallel difference	平面度 (mm) Flatness	厚度差 (mm) Thickness difference	表面粗糙度Ra (μm) Surface roughness Ra
40-80	0.003	0.003	0.02	0.32
80-150	0.005	0.005	0.02	0.32
150-200	0.006	0.006	0.02	0.32
200-250	0.008	0.008	0.02	0.32

### 主要技术参数 (The main technical parameter) :

项目 Item	单位 Unit	参数 Parameter
工件直径 Diameter of work	mm	φ 40— φ 250
工件厚度 Thickness of work	mm	2—80
砂轮尺寸 (外径×内径×厚度) Size of the grinding wheel (outside diameter×inside diameter× thickness)	mm	750×50×60
磨头主轴转速 Rotation speed of principal axis of the grinding head	r/min	760
磨头移动行程 The travel of the grinding head	mm	180
送料速度 Feeding speed	m/min	4—8
磨头磨削进给量 Feeding quantity of the grinding head	mm	0.005
电机总功率 Total power of motor	Kw	47
机床外形尺寸 (长×宽×高) Outside dimension of the machine tool (length×width×height)	mm	4290×3500×1850
机床重量 Weight of machine tool	Kg	11000